



Docklands Residential



6 South Hall Drive

, Rainham, RM13 9HS

£550 Per week

Docklands Residential is pleased to present this charming three-bedroom mid-terrace family home located on South Hall Drive in the desirable area of Rainham, RM13. Built in 1935, this well-maintained property offers a comfortable living space of 872 square feet, making it an ideal choice for families seeking a welcoming environment.

Nestled in a quiet residential street, the home features a delightful south-facing garden, perfect for enjoying sunny afternoons. There is also potential to extend the property to the rear and into the loft, subject to planning permission, allowing for future growth and personalisation.

The ground floor comprises an inviting entrance porch leading to a spacious double reception room, which includes a dining area, and a well-equipped kitchen. The rear garden is well-kept and provides a lovely outdoor space for relaxation and entertainment.

On the first floor, you will find three tastefully decorated bedrooms and a modern three-piece bathroom, ensuring comfort and convenience for the whole family. The property also boasts a well-presented front garden and offers free on-street parking with no permits required.

The location is particularly advantageous, with Rainham Station, providing access to the c2c line, just a 15-minute walk away. This allows for easy commuting into London, with services reaching

Viewing

Please contact us on 0203 8415697 if you wish to arrange a viewing appointment for this property or require further information.



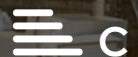
3



1

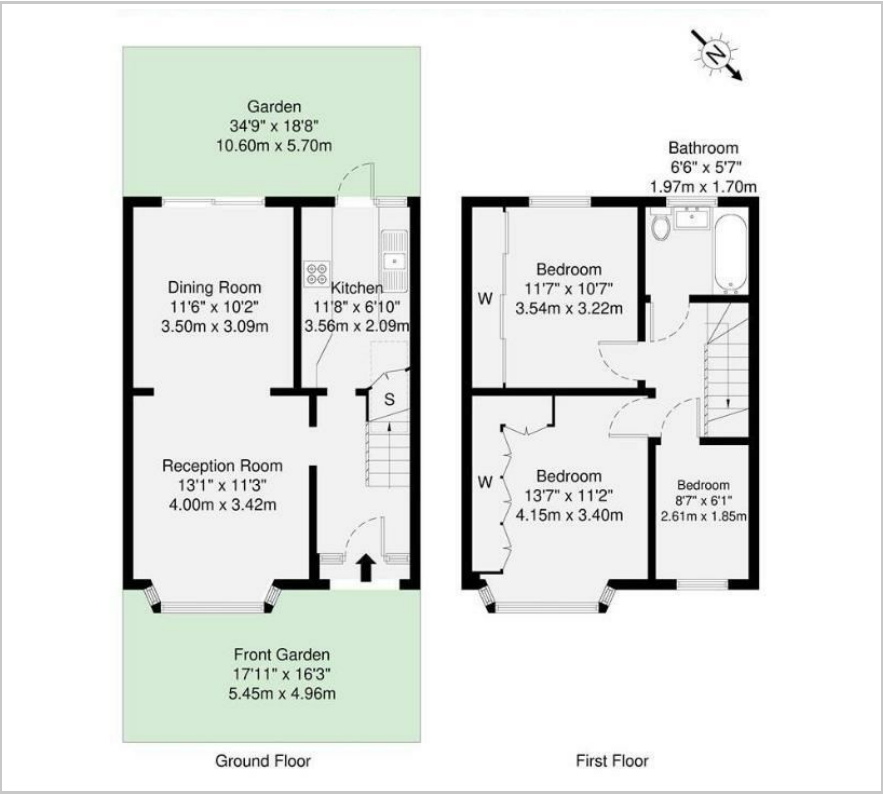


1



C

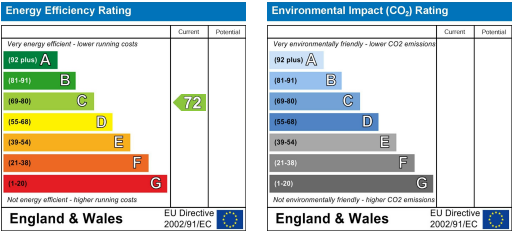
Floor Plan



Area Map



Energy Efficiency Graph



These particulars, whilst believed to be accurate are set out as a general outline only for guidance and do not constitute any part of an offer or contract. Intending purchasers should not rely on them as statements of representation of fact, but must satisfy themselves by inspection or otherwise as to their accuracy. No person in this firms employment has the authority to make or give any representation or warranty in respect of the property.